

DECISION TREES

THE FOLLOWING DECISION TREES WERE DEVELOPED AS A TOOL TO ACCOMPLISH THE DUAL GOALS OF IDENTIFYING AN IDEAL AND mapping a process for communities to work toward that goal by starting with the ideal: a primary prevention approach where investments in the community are sufficient to prevent the vulnerabilities that lead to trafficking. Then, recognizing that children and families may still experience crises and that system involvement is not only embedded in most current Safe Harbor responses but also is appropriate and necessary in certain circumstances, the remaining decision trees identify an ideal approach when these responses are triggered.

As described below, the decision trees are also color-coded to reflect the different stages of the process at which a stakeholder may be encountering a youth survivor, as well as the opportunities throughout the process to connect that young person with services and supports in their community and reduce, or limit, their interaction with a system response. By evaluating the many doors that a young person may enter and be identified as a trafficking victim, these decision trees seek to provide a framework for assessing existing responses, identifying potential gaps, and building the infrastructure and coordination necessary for community-led and child and family-centered responses to trafficked children and youth.

THE “STAGES OF THE PROCESS” ARE COLOR-CODED AS FOLLOWS:

ORANGE: IDENTIFICATION & SCREENING

RED: INITIAL/EMERGENCY RESPONSE

BLUE: MULTIDISCIPLINARY TEAM/COLLABORATIVE REFERRAL PROTOCOL

GREEN: SAFETY/HARM REDUCTION STRATEGIES

YELLOW: CONTINUUM OF CARE/PATH TO HEALING

ACRONYM KEY

CB: Community-based
CBO: Community-based organization
CSE: Commercial sexual exploitation
CSEC/Y: Commercial sexual exploitation of children/youth
CST: Child sex trafficking
CW: Child welfare

JJ: Juvenile justice
LE: Law enforcement
MDT: Multi-disciplinary team
NGO: Non-governmental organization
RHY: Runaway and homeless youth
TPC: Temporary protective custody

RESPONSE TYPES



PRIMARY PREVENTION APPROACH



HOUSING INSECURITY AND FAMILY CRISIS



IDENTIFIED BY LAW ENFORCEMENT



DIRECTED INTO JUVENILE JUSTICE

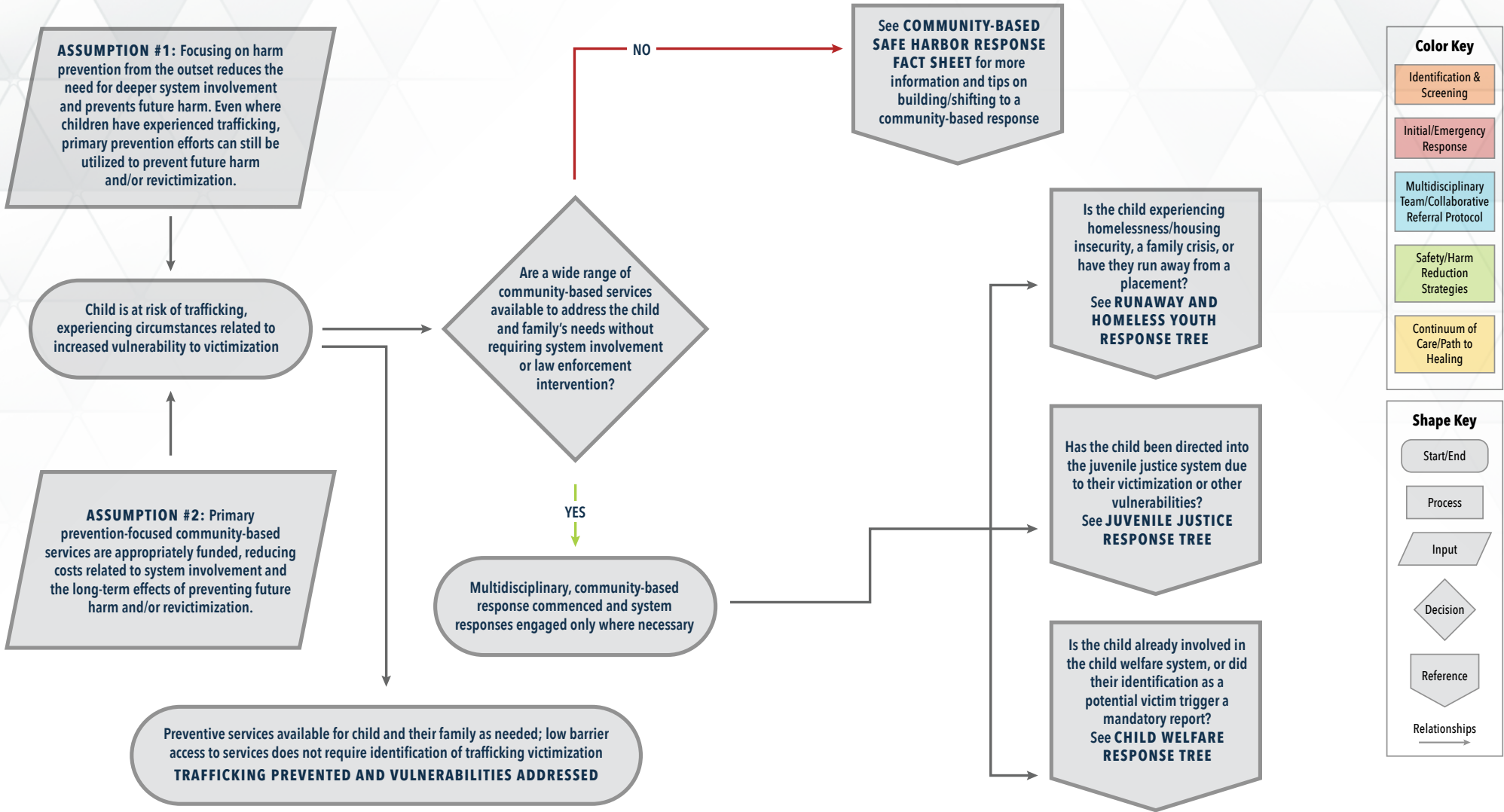


REFERRED TO CHILD WELFARE



PRIMARY PREVENTION APPROACH

DECISION TREE



Color Key

- Identification & Screening
- Initial/Emergency Response
- Multidisciplinary Team/Collaborative Referral Protocol
- Safety/Harm Reduction Strategies
- Continuum of Care/Path to Healing

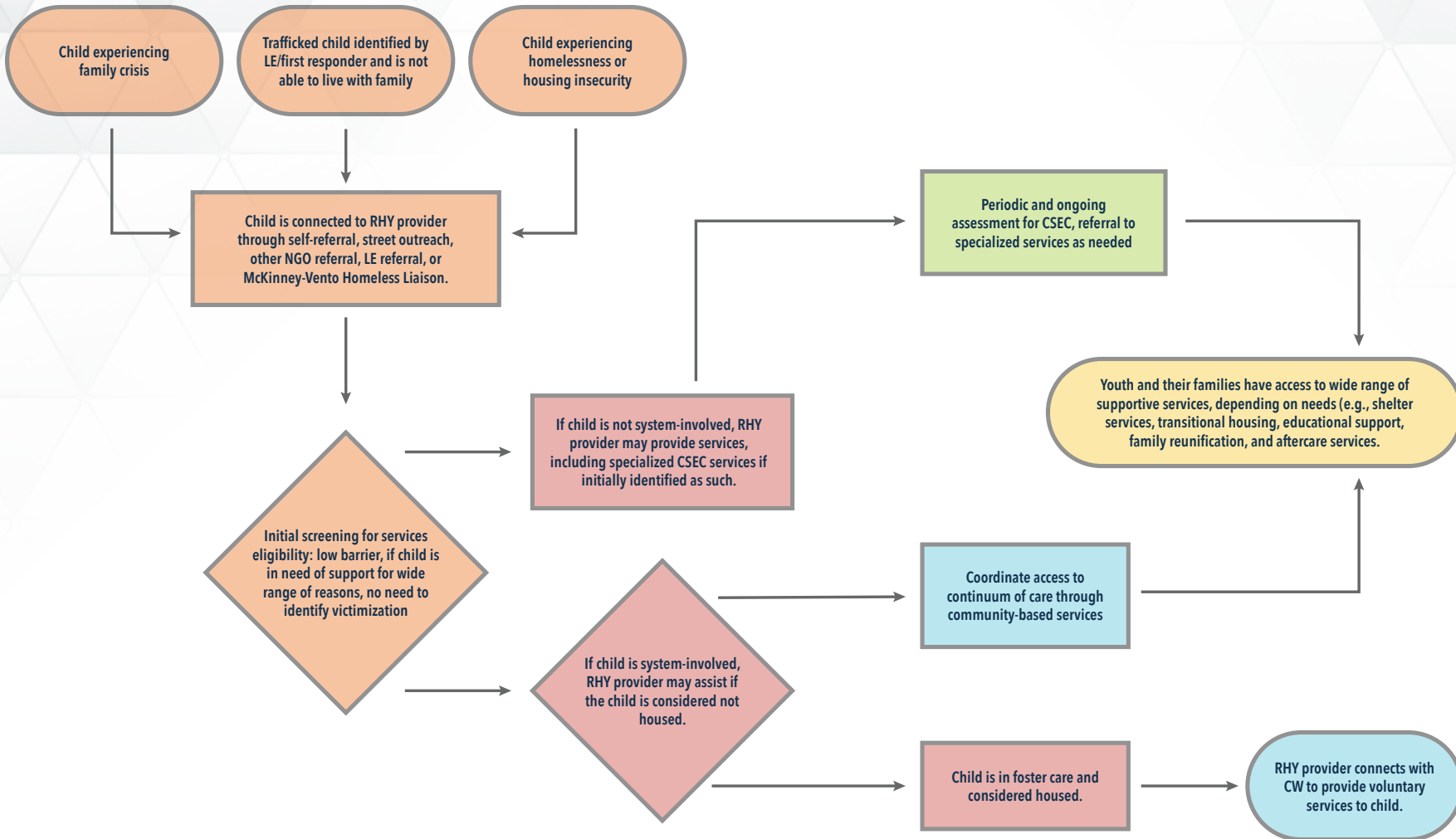
Shape Key

- Start/End
- Process
- Input
- Decision
- Reference
- Relationships



HOUSING INSECURITY AND FAMILY CRISIS

DECISION TREE



Color Key

- Identification & Screening
- Initial/Emergency Response
- Multidisciplinary Team/Collaborative Referral Protocol
- Safety/Harm Reduction Strategies
- Continuum of Care/Path to Healing

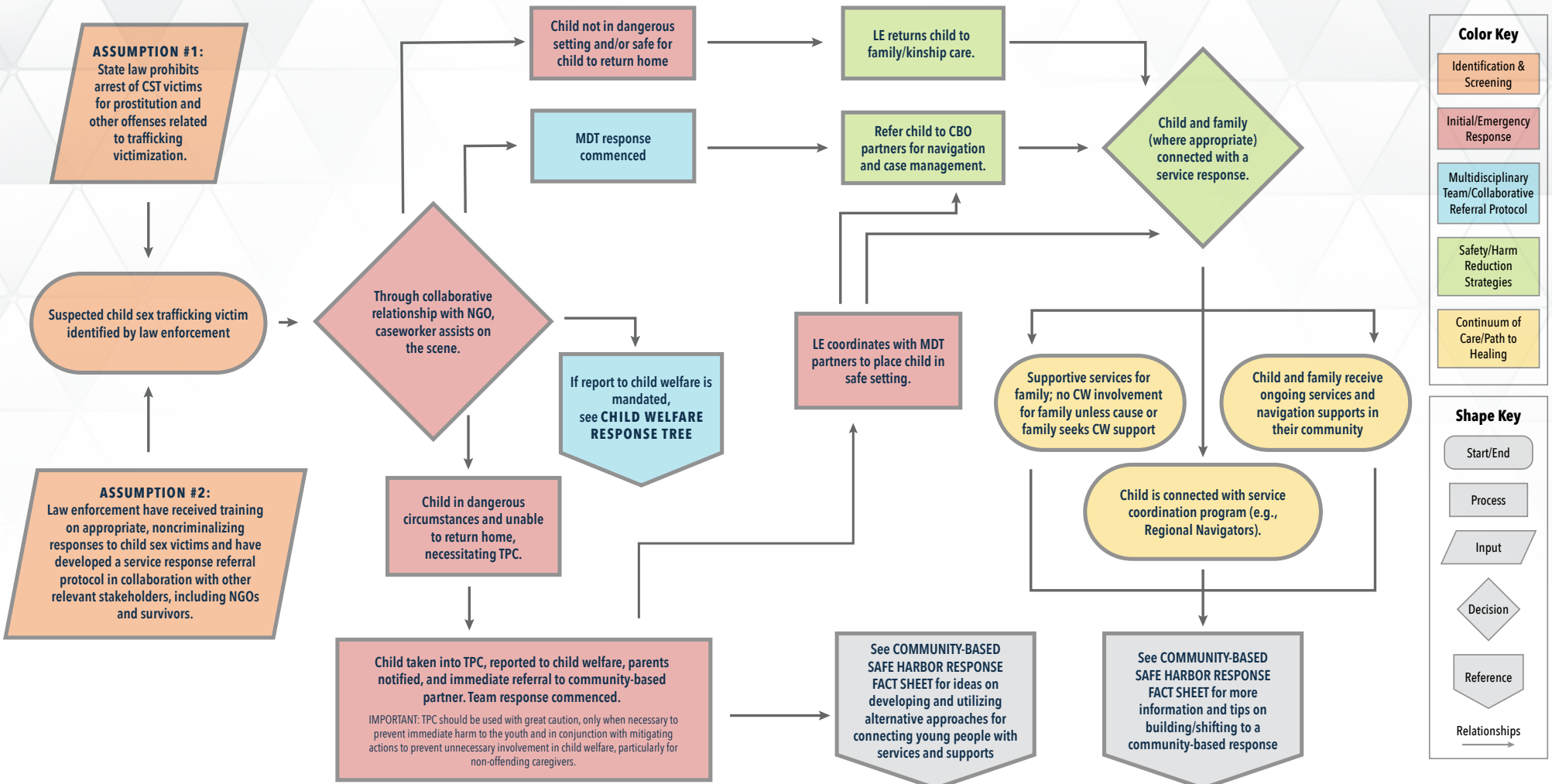
Shape Key

- Start/End
- Process
- Input
- Decision
- Reference
- Relationships



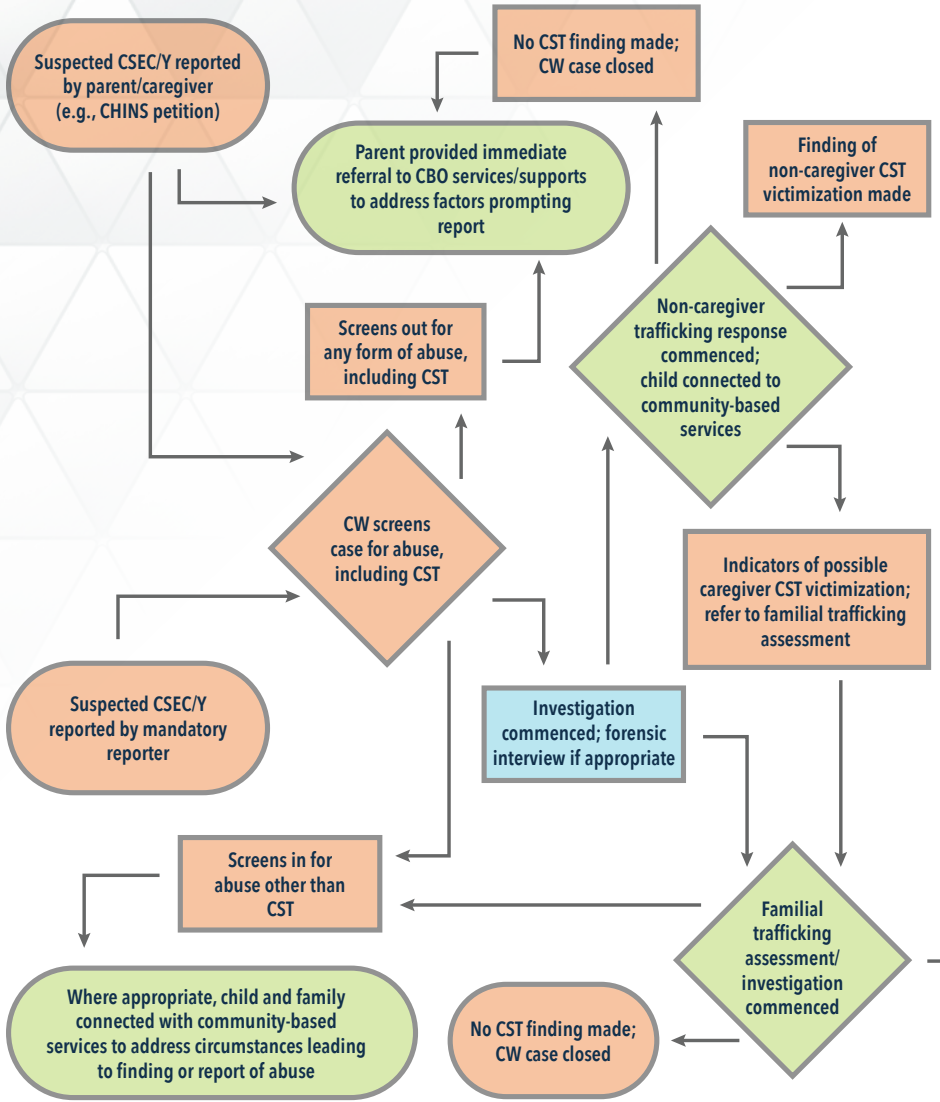
IDENTIFIED BY LAW ENFORCEMENT

DECISION TREE

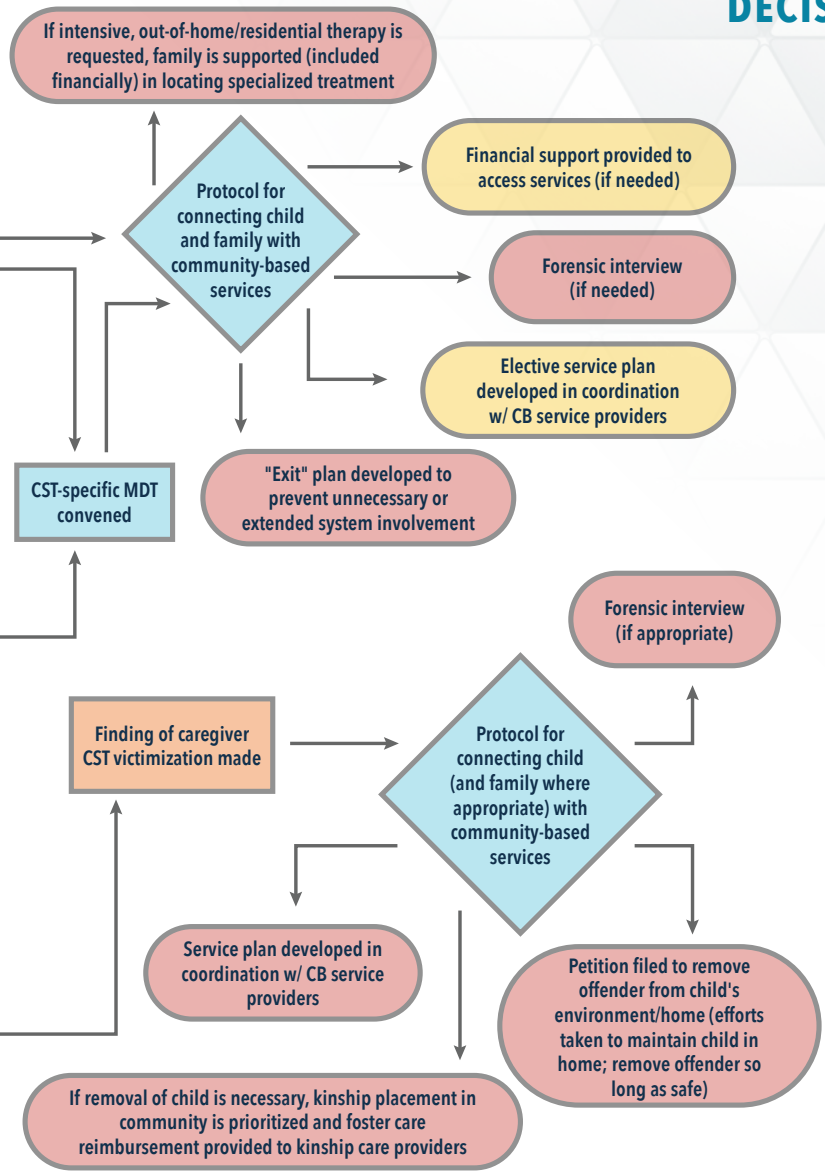




REFERRED TO CHILD WELFARE



DECISION TREE



Color Key

- Identification & Screening
- Initial/Emergency Response
- Multidisciplinary Team/Collaborative Referral Protocol
- Safety/Harm Reduction Strategies
- Continuum of Care/Path to Healing

Shape Key

- Start/End
- Process
- Input
- Decision
- Reference
- Relationships